



النشرة الاقتصادية



نشرة دورية تصدر عن الإدارة العامة للبحوث والإحصاء - بنك السودان

الفترة 1/1 - 2006/1/15

العدد رقم 204

: *

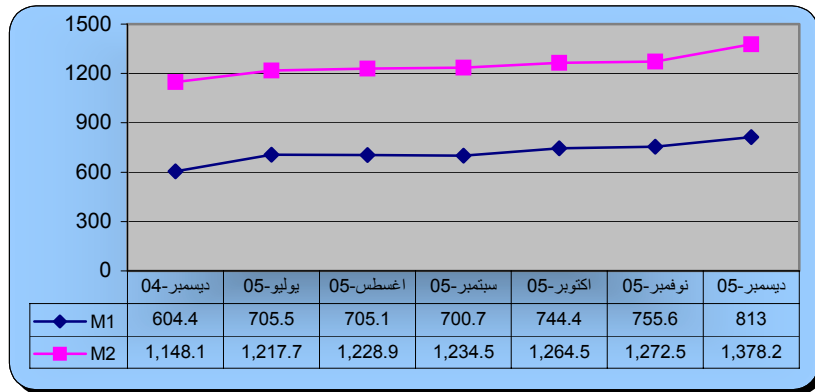
(1)

()

2005	2005	2005	2005	
1,378.2	1,272.5	1,264.4	1,234.5	
376.1	346.5	378.6	334.4	
436.9	409.1	365.9	366.3	
565.2	516.9	520.0	533.8	
1,530.3	1,433.5	1,398.8	1,433.4	()
700.0	656.5	634.4	600.5	
976.9	908.5	879.7	888.4	
%31.7	%32.2	%28.9	%29.7	/
%27.3	%27.2	%30.0	%27.1	/
%41.0	%40.6	%41.1	%43.2	/
%71.7	%72.3	%72.1	%67.6	/

: 2005 -

(2)



(3)

*

2006/01/15		2005/12/14	
115.8	411.5	96.4	395.3
1.2	49.1	2.2	48.0
124.2	272.7	106.1	236.8
79.9	10.5	78.1	11.3
0.0	3.7	0.1	4.1
321.1	747.5	282.9	695.5
1,068.6		978.4	

*

-: (2005/01/14-1)

(4)

%39.7 11.5%.

()

() %18.0 () %9.6
)%80.0 () %10.0

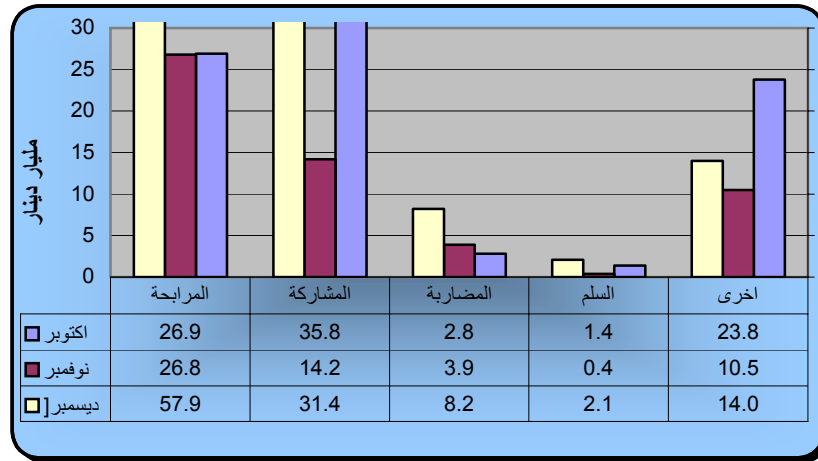
()

()

.

()

:(2005 -)



:(2005)

()

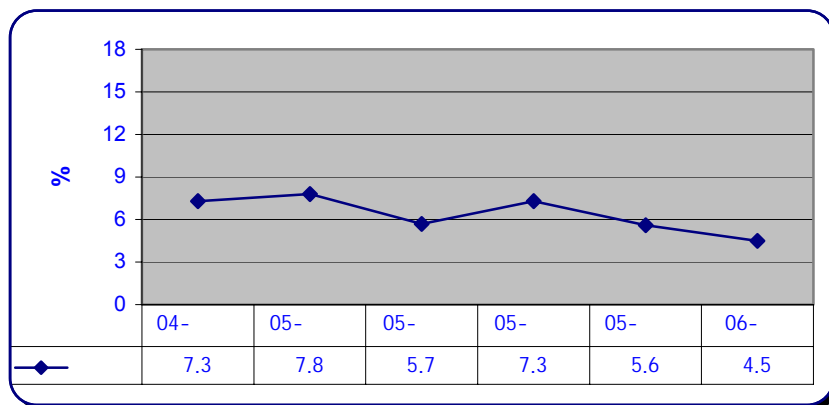
()

%	*	%	
8.3	39.1	8.5	9.6
10.5	49.5	12.5	14.2
36.0	169.0	22.2	25.3
9.0	42.1	5.8	6.6
2.6	12.1	8.5	9.6
7.7	36.0	16.4	18.7
25.9	122.2	26.1	29.6
100.0	470.0	100.0	113.6

*

(5)

2006 %4.5 2005 %5.6
 (2006 -)



-: /6

: 2006 15

: ()

()

229.85	
231.00	

: ()

()

230.70	230.0	230.60	231.85	229.90	231.15	
231.30	230.50	230.80	232.20	230.00	231.40	

*
*

()

:

(7)

26.11	28.55	2006/01/15 -01/01

(2006-2005)

()

%		2006/01/15-1/1	2005/1/15-1/1	
%19.12-	6.75-	28.55	35.30	
%26.14-	9.28-	26.11	35.39	
%2,888.9-	2.60	2.44	0.9-	

(8)

		*		
		570,161	2005/11/28	2005/99
		380,107	2005/12/3	2005/100
		600,000	2005/12/14	2005/103
		320,000	2005/12/14	2005/104
		570,282	2005/11/17	2005/105
		570,176	2005/11/26	2005/96
		25,000	2006/1/21	2006/1
		800,000	2006/1/19	2006/3
		200,000	2006/1/19	2006/4

*

: *

(9)

()

2005	2005	2005	
-698.23	-488.94	-375.75	(2+1)
-256.15	-68.74	-73.93	. 1
-442.08	-420.20	-301.82	. 2
866.83	581.64	381.20	
102.64	142.42	201.82)
			(
271.24	235.12	207.27	

*

:

(10)

:2006/1/15 ()

()

()

178,455.95	3,569,119	2005/10/1
104,624.95	2,092,499	
54,961.95	1,099,239	
228,118.95	4,562,379	2006/1/15

.2006/1/15

()

()

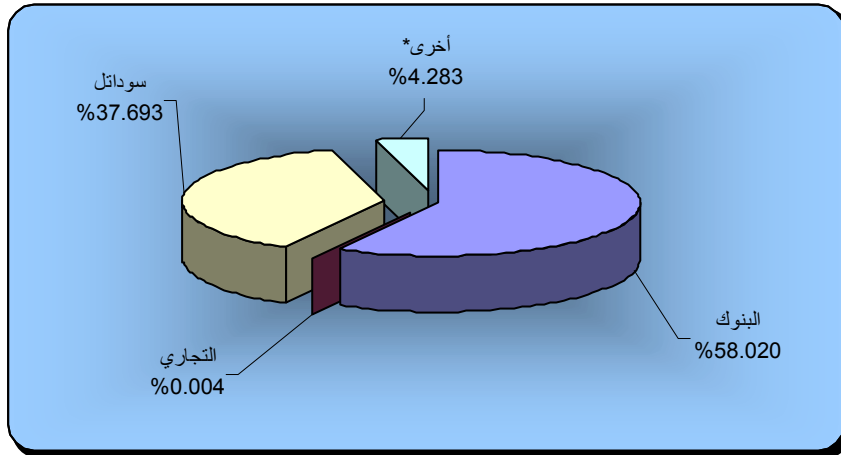
4,940	49,400	2006/1/1
12,800	128,000	(+)
4,240	42,400	(-)
13,500	135,000	2006/1/15

:

(1)

	%	()		
6	58.020	74.5	2,376,684	
1	0.004	0.005	25,400	
6	37.693	48.4	5,994	
7	4.283	5.5	100,000	*
20	100.000	128.4	221,968,624	

*



:

(2)

	%	()		
3	94.6	10.10	1,008	2005
1	4.3	0.46	180	
2	1.1	0.12	122	
6	100.0	10.68	1,310	

